

ROCKET RENTALS

PLANT HIRE CATALOGUE



01453 51 95 51



ROCKET RENTALS



Rocket Rentals Limited is a family run business offering a local, reliable and efficient service.



We hire Mini Diggers, Excavators, Dumpers, Skip Tip Dumpers, Rollers, Telehandlers, Attachments, Bunded Bowsers, Welfare Cabins, Access, Generators, Trailers, Towerlights and Mules. We offer our customers the highest level of equipment, service and reliability.



Our machines provide safety, security and ease of operation.



For more information about Rocket Rentals please visit our website:

www.rocketrentals.co.uk

or call us on **01453 51 95 51**

Alternatively email us at hire@rocketrentals.co.uk

We look forward to hearing from you!



rocketrentals.co.uk



Account Application



Terms of Hire





PROSTATE CANCER UK



Charity Kubota KX057-4 Excavator

The Blue machine has been purchased by Rocket Rentals Limited to raise funds and awareness for Prostate Cancer UK within the Construction Industry. For every hire of this machine Rocket Rentals Limited will donate all profit to the charity Prostate Cancer UK.

Specifications: Weight: 5545 kg, Length: 5520 mm, Width: 1960 mm
Height: 2550 mm, Max Digging Depth: 3890 mm, Max Digging Reach: 6130 mm

This machine is supported by, Chepstow Construction Equipment, Kubota UK, Kubota Finance, TrakM8 and Whites Material Handling.



Rocket Rentals has an extensive range of quality vehicles at your service...



Articulated Trucks



Rigid Trucks



Service Vehicles



Support Vehicles

CONTENTS

01 EXCAVATORS

7



02 ROLLERS

11



03 DUMPERS

15



04 TELEHANDLERS

19



05 ATTACHMENTS

23



06 MULES

27



07 TRAILERS

29



08 BUNDED BOWSERS

33



09 PORTABLE WELFARE CABINS

35



10 GENERATORS & TOWER LIGHTS

37



11 SCISSOR LIFTS, BOOM LIFTS / ACCESSORIES 41



NOTES



A large white rounded rectangle containing 20 horizontal dotted lines for writing notes.



EXCAVATORS

Plant Hire you can trust

☎ 01453 519551

✉ hire@rocketrentals.co.uk

1 Tonne Micro Excavator



Dimensions:

Width: 750mm - 1020mm
 Length: 1325mm
 Height: 2190mm
 Weight: 1180kg
 Dig Depth: 1755mm
 Reach: 3285mm

1.7 Tonne Mini Excavator



Dimensions:

Width: 990mm - 1240mm
 Length: 3550mm
 Height: 2340mm
 Weight: 1650kg
 Dig Depth: 2310mm
 Reach: 3900mm

2.5 Tonne Mini Excavator



Dimensions:

Width: 1500mm
 Length: 4375mm
 Height: 2430mm
 Weight: 2376kg
 Dig Depth: 2580mm
 Reach: 4250mm

3 Tonne Mini Excavator



Dimensions:

Width: 1500mm
 Length: 4190mm
 Height: 2430mm
 Weight: 2665kg
 Dig Depth: 2820mm
 Reach: 4740mm

3 Tonne Excavator



Dimensions:

Width:	1450mm
Length:	4595mm
Height:	2525mm
Weight:	2950kg
Dig Depth:	2835mm
Reach:	4710mm

6 Tonne Excavator



Dimensions:

Width:	2000mm
Length:	5550mm
Height:	2560mm
Weight:	5720kg
Dig Depth:	3895mm
Reach:	6130mm

9 Tonne Excavator



Dimensions:

Width:	2200mm
Length:	6660mm
Height:	2250mm
Weight:	8774kg
Dig Depth:	4580mm
Reach:	7290mm

13 Tonne Excavator



Dimensions:

Width:	2690mm
Length:	7300mm
Height:	2867mm
Weight:	13,876kg
Dig Depth:	6028mm
Reach:	8796mm

Hitachi ZX135 Bladed Excavator



Dimensions:

Width: 2490mm
 Length: 7390mm
 Height: 2790mm
 Weight: 15,000kg
 Dig Depth: 8860mm
 Reach: 5980mm

15 Tonne Excavator

Cat312E
 Grade Control



Dimensions:

Width: 2690mm
 Length: 7670mm
 Height: 2970mm
 Weight: 15,000kg
 Dig Depth: 6040mm
 Reach: 8620mm

22 Tonne Excavator



Dimensions:

Width: 3090mm
 Length: 9584mm
 Height: 2996mm
 Weight: 22,172kg
 Dig Depth: 9980mm
 Reach: 9810mm

22 Tonne Demo Spec



Dimensions:

Width: 3090mm
 Length: 956mm
 Height: 3086mm
 Weight: 23,461kg
 Dig Depth: 6694mm
 Reach: 9859mm



ROLLERS

Plant Hire you can trust

☎ 01453 519551

✉ hire@rocketrentals.co.uk

28" Pedestrian Roller



Dimensions:

Width: 710mm
 Length: 2200mm
 Weight: 488kg

Available with Trailer Electric Start

Bomag BW80 Economizer



Dimensions:

Width: 800mm
 Length: 1862mm
 Height Rops D: 1482mm
 Height Rops U: 2300mm
 Weight: 1600kg

Available with Trailer

Bomag BW120 Economizer



Dimensions:

Width: 1200mm
 Length: 2475mm
 Height Rops D: 1800mm
 Height Rops U: 2475mm
 Weight: 2600kg

Bomag BW135 Economizer



Dimensions:

Width: 1300mm
 Length: 2840mm
 Height: 2700 mm (Top of roll bar)
 Weight: 3900kg
 Fitted with Temperature Sensor and Economizer

Bomag BW138 Economizer



Dimensions:

- Width: 1470mm
- Length: 2840mm
- Height: 2700mm (Top of roll bar)
- Weight: 4300kg
- Fitted with Temperature Sensor and Economizer

Bomag BW124 Roller



Dimensions:

- Width: 1310mm
- Length: 3350mm
- Height: 2491mm
- Weight: 3899kg

Bomag BMP8500 Economizer



Dimensions:

- Drum Width: 650-850
- Width: 850mm
- Length: 1897mm
- Weight: 1585kg
- Radio Controlled With Economizer

FUEL BOX

The Fuelbox helps, Improve Combustion, Boost Power, Reduce Emissions, Improve Fuel Consumption, Prevent Contamination, Reduce Downtime, Environmentally Friendly



RED DIESEL IN A BOX

The Fuelbox is suitable for use in, Generators, Forklift Trucks, Plant and Machinery, Cement Mixers, Diesel Powered Washing & Heating Systems, Road Working Equipment.

The Fuelbox is suitable for all off-road diesel engines, fitted with DPF, EGR and SCR systems including modern machines calibrated to EN590!

For more information on the Fuelbox and product range, please telephone **01453 51 95 51**



01453 519551

WWW.ROCKETRENTALS.CO.UK



DUMPERS

Plant Hire you can trust

☎ 01453 519551

✉ hire@rocketrentals.co.uk

1 Tonne Dumper



Dimensions:

Width: 750mm
 Length: 1900mm
 Dump Height: 1300mm
 Fuel: Petrol
 Rubber Tracks, Walk or Ride On
 Weight 600kg

1 Tonne Skip Dumper



Dimensions:

Width: 1180mm
 Length: 3080mm
 Dump Height: 2080mm
 Fuel: Diesel
 Folding ROPS Frame

1.5 Tonne High Swivel Dumper



Dimensions:

Width: 1467mm
 Length: 3715mm
 Height Rops D: 1910mm
 Height Rops U: 3037mm
 Weight: 2190kg

3 Tonne Dumper Narrow



Dimensions:

Width: 1650mm
 Length: 3774mm
 Height Rops D: 1965mm
 Height Rops U: 3092mm
 Weight: 2010kg

3 Tonne Dumper Standard (JCB)

**Dimensions:**

Width: 1957mm
 Length: 3952mm
 Height Rops D: 1965mm
 Height Rops U: 2920mm
 Weight: 2280kg

3 Tonne Swivel Dumper

**Dimensions:**

Width: 1650mm
 Length: 3935mm
 Height Rops D: 1965mm
 Height Rops U: 3092mm
 Weight: 2190kg

6 Tonne Dumper

**Dimensions:**

Width: 2375mm
 Length: 4252mm
 Height Rops D: 2100mm
 Height Rops U: 3130mm
 Weight: 4310kg

6 Tonne Swivel Dumper

**Dimensions:**

Width: 2135mm
 Length: 4780mm
 Height Rops D: 2170mm
 Height Rops U: 3360mm
 Weight: 4340kg

9 Tonne Dumper



Dimensions:

Width: 2440mm
 Length: 4635mm
 Height Rops D: 2555mm
 Height Rops U: 3335mm
 Weight: 4715kg

Prices on application

9 Tonne Dumper Cabbed



Dimensions:

Width: 2444mm
 Length: 4670mm
 Height Rops: 3588mm
 Weight: 5110kg

NOTES

.....

.....

.....

.....

.....

.....

.....

.....

.....

.....



TELEHANDLERS

Plant Hire you can trust

☎ 01453 519551

✉ hire@rocketrentals.co.uk

4 Metre Telehandler



Dimensions:

Width: 1560mm
 Length: 3230mm
 Height: 1800mm
 Weight: 3500kg

6 Metre Telehandler



Dimensions:

Width: 1.84m
 Length: 4m
 Height: 1.89m
 Weight: 5490kg

7 Metre Telehandler



Dimensions:

Width: 2230mm
 Length: 4990mm
 Height: 2490mm
 Weight: 7060kg

9.5 Metre Telehandler



Dimensions:

Width: 2230mm
 Length: 4990mm
 Height: 2490mm
 Weight: 8215kg

14 Metre Telehandler



Dimensions:

Width: 2350mm

Length: 5800mm

Height: 2590mm

Weight: 10066kg

17 Metre Telehandler



Dimensions:

Width: 2440mm

Length: 6360mm

Height: 2690mm

Weight: 12060kg

04

TELEHANDLERS

Tipping Skip Attachment



Tipping skips are ideal for placing in production or storage areas, to help keep working areas clear while also allowing safe and speedy removal of scrap or rubbish materials.

Extension Fork Attachment



Extension fork attachments allow for safe and stable handling of loads which are longer than the forklift forks.

Prices on application

Fork & Grab Attachment



Dimensions:
 Height: 1.28m
 Depth: 1.28m
 Width: 2.29m
 Weight: 710kg

Man Cage Attachment



Dimensions:
 Width: 1200mm
 Depth: 1150mm
 Height: 1150mm

Bucket Attachment



Bucket attachments are used to scoop and carry loose material and debris like gravel or dirt. The material bucket can also be used for clean up around the job site.

Lifting Hook Attachment 4000Kg



Using a lifting hook is a quick and easy method of converting a forklift / telehandler into a mobile crane.



ATTACHMENTS

Plant Hire you can trust

☎ 01453 519551

✉ hire@rocketrentals.co.uk

1-2 Tonne Hydraulic Breaker



Dimensions:
 Weight: 127kg
 Flow: 15-25 lpm
 Impact: 180 Joules

3 Tonne Hydraulic Breaker



Dimensions:
 Weight: 153kg
 Flow: 20-35 lpm
 Impact: 300 Joules

5 Tonne Hydraulic Breaker



Dimensions:
 Weight: 250kg
 Flow: 30-50lpm
 Impact: 450 Joules

8 Tonne Hydraulic Breaker



Dimensions:
 Weight: 293kg
 Flow: 35-65 lpm
 Impact: 670 Joules

14 Tonne Hydraulic Breaker



Dimensions:

Weight: 551kg
Flow: 81-118 lpm
Impact: 1280 Joules

20 Tonne Hydraulic Breaker



Dimensions:

Weight: 1766kg
Flow: 120-180lpm
Impact: 3196 Joules

Selector Grabs



Tipping skips are ideal for placing in production or storage areas, to help keep working areas clear while also allowing safe and speedy removal of scrap or rubbish materials.

Pile Croppers



Pile croppers are used to crop down concrete piles, Concrete piles are often used to form the foundations of a structure.

Compactor Plates



Compactor plates enable compaction of embankments, deep excavations and trenches, both safely and efficiently.

Riddle / Screening Buckets



Riddle buckets are used for reclaiming waste like demolition rubble or, screening top-soil, green waste recycling and separating fines from rock or aggregates.

Augers



Augers are great for using to drill deeps holes to allow for deep foundations in construction.

Pallet Forks



Pallet forks are designed to handle palletized material and other loads that require transportation and placement.



MULES

Plant Hire you can trust

☎ 01453 519551

✉ hire@rocketrentals.co.uk

Kawasaki Mule 4010 - 4x4



Dimensions:

Length: 3005mm
 Width: 1575mm
 Height: 1925mm
 2 Seater

Kawasaki Mule 4010 Trans 4x4



Dimensions:

Length: 3305mm
 Width: 1486mm
 Height: 1925mm
 4 Seater

Kawasaki Mule Trailer



Suitable for being attached to a mule for towing and carrying items that are more suited for a trailer.



TRAILERS

Plant Hire you can trust

☎ 01453 519551

✉ hire@rocketrentals.co.uk

GH Plant Trailer



Dimensions:

Gross Weight: 1500kg
 Unladen Weight: 270kg
 Internal Length: 1.88m
 Internal Width: 1.23m

Tiltbed Trailer



Dimensions:

Gross Weight: 3000kg
 Unladen Weight: 719kg
 Internal Length: 4.07m
 Internal Width: 2.04m
 Overall Length: 5.80m
 Overall Width: 2.04m

GX Plant Trailer



Dimensions:

Gross Weight: 2700kg
 Unladen Weight: 540kg
 Internal Length: 2.45m
 Internal Width: 1.27m
 Overall Length: 4.38m
 Overall Width: 1.78

Tipper Trailer



Dimensions:

Gross Weight: 2700kg
 Unladen Weight: 700kg
 Internal Length: 2.46m
 Internal Width: 1.49m
 Overall Length: 3.81m
 Overall Width: 1.59m

Horse Trailer



Dimensions:

- Gross Weight: 2700kg
- Unladen Weight: 1000kg
- Internal Length: 3.52m
- Internal Width: 1.79m
- Overall Length: 4.65m
- Overall Width: 2.26m

Trailer Lock



Trailer Locks are very easy to fit and use on a trailer and are essential in the prevention of thefts of trailers.

NOTES

.....

.....

.....

.....

.....

.....

.....

.....

.....



Lighthouse

The Construction Industry Charity

CLUB

Rocket Rentals are proud to say that we are supporters of The Lighthouse Club; a charity dedicated to providing emergency financial assistance to the construction community.

Lighthouse Construction Industry Charity

The Lighthouse Construction Industry Charity has been providing emergency financial assistance to the construction community since 1956.

It exists to provide...

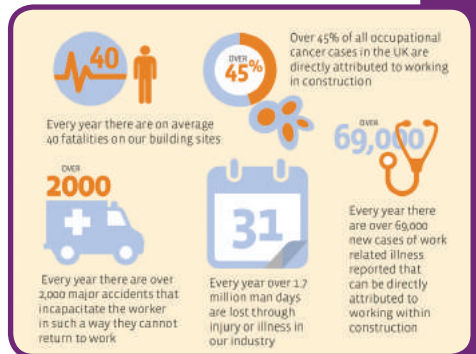
- Emergency financial assistance
- Welfare and wellbeing advice
- Emotional and legal support...

to the construction industry workforce and their families in times of hardship and stress.

It promotes initiatives aimed at avoiding accident and improving safety on construction sites, and delivers local and national events that embrace networking, fundraising and fun within the industry.

The Charity receives no public finance and relies on the support from within the industry and its nationwide network of 22 independent, volunteer managed Regional Lighthouse Clubs to fund its charitable work.

The Lighthouse Club also encourages an annual membership scheme for individual and company supporters. This scheme has already attracted over 4000 supporters and helps the Charity build a predictable annuity income to confidently launch new charitable initiatives for the benefit of the Construction Community.



For more information visit

www.lighthouseclub.org or www.constructionindustryhelpline.com

Help provide support for ill and injured construction workers and their families by kindly making a donation

shining brighter, reaching further



info@lighthouseclub.org

www.lighthouseclub.org

Lighthouse
CLUB



BUNDED BOWSERS

Plant Hire you can trust

☎ 01453 519551

✉ hire@rocketrentals.co.uk

Abbi 950L Bunded Highway Tow



Dimensions:

Capacity: 950L
 Dimensions: 2760 x 1550 x 1900
 Weight: 660kg
 (1500kg full)

Abbi 2000L Bunded Highway Tow



Dimensions:

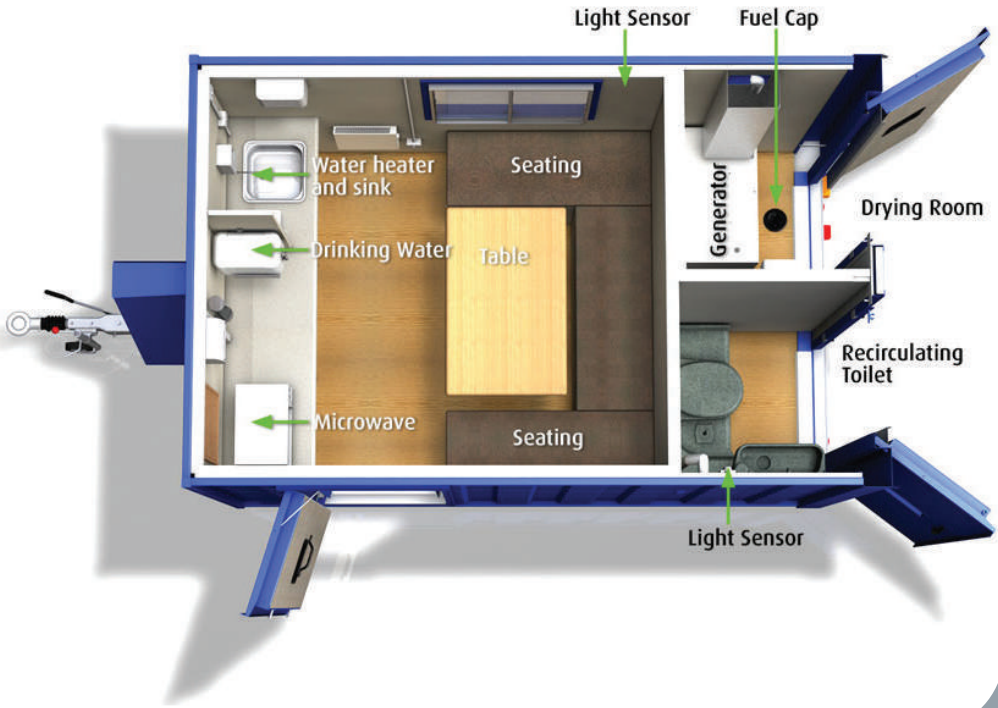
Capacity: 2000L
 Dimensions: 3520 x 1657 x 1882
 Weight: 1115kg
 (3000kg full)

Abbi-Deluxe Blue 1500L



Dimensions:

Capacity: 1500L Fuel
 160L Adblue
 This bowser eliminates the need for two separate fuel and Adblue bowzers on site and combines them into one bowser.



PORTABLE WELFARE CABINS

Plant Hire you can trust

☎ 01453 519551

✉ hire@rocketrentals.co.uk

Comfort Space 7



Dimensions:
 Weight: 1800kg
 Length: 3.60m
 Width: 2.30m
 Height: 2.37m

Big Space 16



Dimensions:
 Weight: 2000kg
 Length: 4.80m
 Width: 2.30m
 Height: 2.37m

Big Space 24



Dimensions:
 Weight: 3000kg
 Length: 6.98m
 Width: 2.44m
 Height: 2.37m



GENERATORS & TOWERLIGHTS

Plant Hire you can trust

☎ 01453 519551

✉ hire@rocketrentals.co.uk

Towerlight VT1



Dimensions:
Close Dimensions:
3400x1550x2330mm
Open Dimensions:
3450x1850x9000mm
Weight: 1115kg
Floodlights: 4x1000W

6kVA Generator



Dimensions:
Length: 1050mm
Height: 750mm
Width: 590mm
Weight: 203kg

10kVA Generator



Dimensions:
Length: 1280mm
Height: 880mm
Width: 710mm
Weight: 300kg

15kVA Generator



Dimensions:
Length: 1400mm
Height: 780mm
Width: 635mm
Weight: 390kg

22kVA Generator**Dimensions:**

Length: 1900mm

Height: 1500mm

Width: 900mm

Weight: 660kg

33kVA Generator**Dimensions:**

Length: 1900mm

Height: 1500mm

Width: 900mm

Weight: 660kg

50kVA Generator**Dimensions:**

Length: 2200mm

Height: 1650mm

Width: 1100mm

Weight: 1070kg

70kVA Generator**Dimensions:**

Length: 2200mm

Height: 1650mm

Width: 1100mm

Weight: 1320kg

110kVA Generator



Dimensions:

Length: 2200mm
Height: 1650mm
Width: 1100mm
Weight: 1320kg

Prices on application

NOTES

.....

.....

.....

.....

.....

.....

.....

.....



SCISSOR & BOOM LIFTS / ACCESSORIES

Plant Hire you can trust

☎ 01453 519551

✉ hire@rocketrentals.co.uk

GS-1532 Electric Scissor Lift



Dimensions:

- Working Height: 6.57m
- Platform Height: 4.57m
- Width: 0.81cm
- Lift Capacity: 272kg

GS-1932 Electric Scissor Lift



Dimensions:

- Working Height: 7.79m
- Platform Height: 5.79m
- Width: 81.3cm
- Lift Capacity: 227kg

GS-2632 Electric Scissor Lift



Dimensions:

- Working Height: 9.92m
- Platform Height: 7.92m
- Width: 0.81m
- Lift Capacity: 227kg

GS-2646 Electric Scissor Lift



Dimensions:

- Working Height: 9.92m
- Platform Height: 7.92m
- Width: 1.17m
- Lift Capacity: 454kg

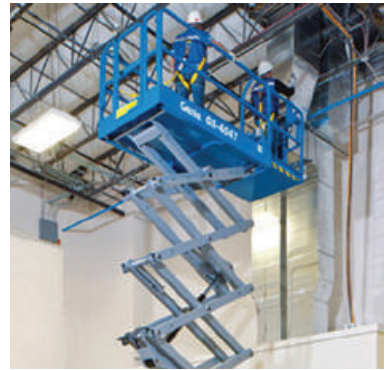
GS-3246 Electric Scissor Lift



Dimensions:

Working Height: 11.75m
 Platform Height: 9.75m
 Width: 1.17m
 Lift Capacity: 318kg

GS-4047 Electric Scissor Lift



Dimensions:

Working Height: 13.89m
 Platform Height: 11.89m
 Width: 1.97m
 Lift Capacity: 249kg

GS 2669-RT 4x4



Dimensions:

Working Height: 9.70m
 Platform Height: 7.70m
 Width: 1.75cm
 Lift Capacity: 680kg
 4x4
 Outriggers

GS 3369-RT 4x4



Dimensions:

Working Height: 11.75m
 Platform Height: 9.75m
 Width: 1.75m
 Lift Capacity: 454kg
 4x4
 Outriggers

GS 4069-RT 4x4



Dimensions:

Working Height: 14.12m
Platform Height: 12.12m
Width: 1.75m
Lift Capacity: 363kg
4x4, Outriggers, Bi Energy

Z33/18 Electric



Dimensions:

Working Height: 12m
Platform Height: 10m
Width: 1.50m
Lift Capacity: 200kg
Non Marking Tyres

Z45/25 J RT 4WD



Dimensions:

Working Height: 16.05m
Platform Height: 14.05m
Width: 1.83m
Lift Capacity: 227kg
4x4, On-Board Generator
Foam Filled Tyres, Track and Trace

Z45/25 XC



Dimensions:

Working Height: 16.05m
Platform Height: 14.05m
Width: 1.83m
Lift Capacity: 300-454kg
4x4, On-Board Generator
Foam Filled Tyres, Track and Trace

Z62/40 J RT 4WD



Dimensions:

Working Height: 20.87m
 Platform Height: 18.87m
 Width: 2.49m
 Lift Capacity: 227kg
 Weight: 10,281kg
 4x4, On Board Generator
 Foam Filled Tyres, Track and Trace

Genie Z60/37 FE



Dimensions:

Working Height: 20.16m
 Platform Height: 18.16m
 Width: 2.49m
 Lift Capacity: 227kg
 Weight: 7756kg

HR12 4x4 Bi-Energy



Dimensions:

Working Height: 12.2m
 Platform Height: 10.2m
 Width: 1.6m
 Lift Capacity: 200kg
 4X4
 Non Marking Tyres

Niftylift 120T Trailer Mount



Dimensions:

Working Height: 12.2m
 Platform Height: 10.2m
 Width: 1.5m
 Lift Capacity: 200kg

Wheel Covers



Wheel covers enable machines to operate on surfaces whilst preventing potential damage to the floor they are operating on, they are simple to fit and available in a range of different sizes.

Oil Drip Protection Sheets



Oil drip protection sheets are used to prevent oil and hydraulic drips from contaminating the floor where the power access unit is operating.

Prices on application

NOTES

A large, rounded rectangular area with a light blue background and horizontal dashed lines, intended for handwritten notes.